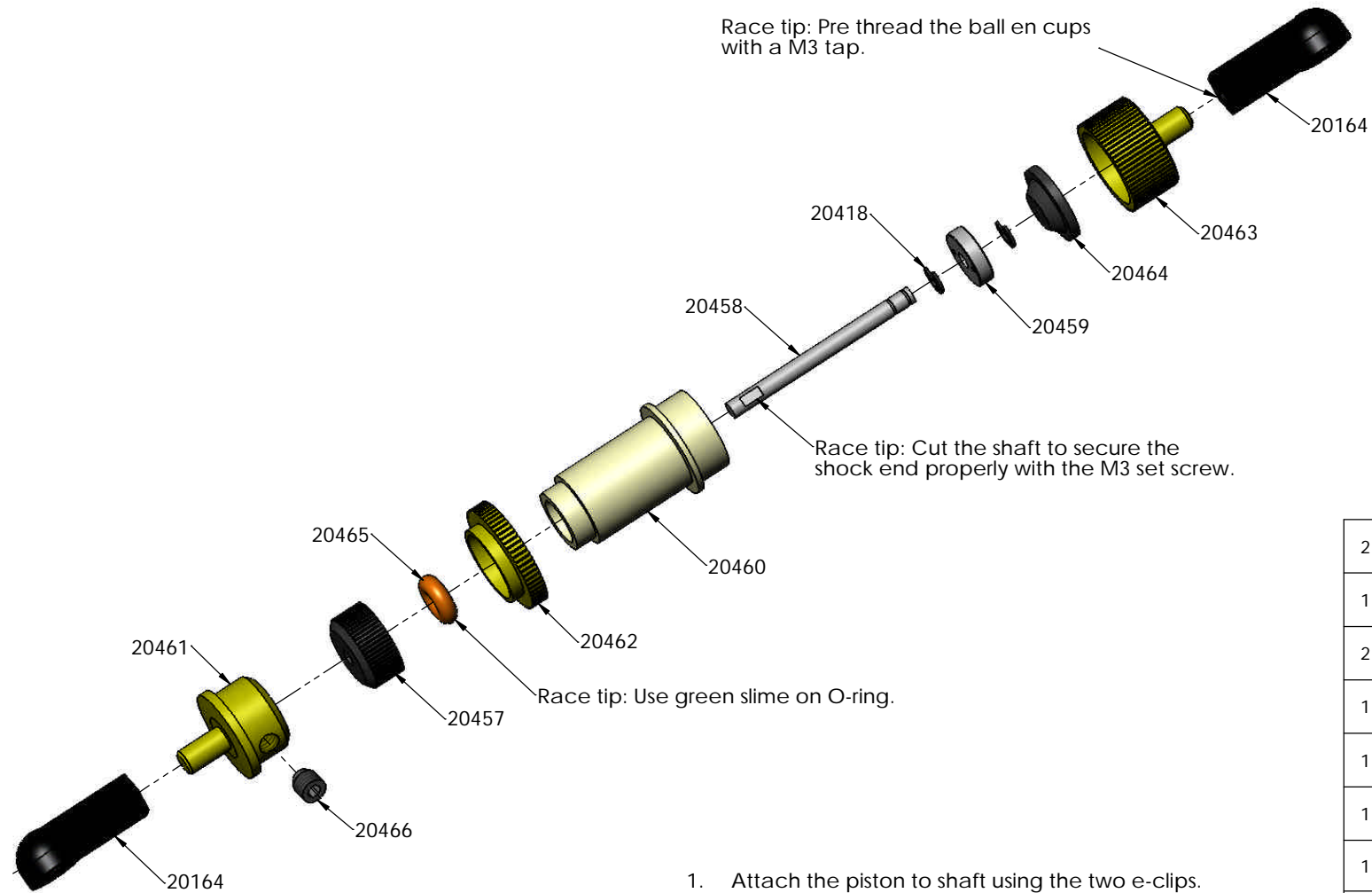


Ultra smooth Pro shock #20455



1. Attach the piston to shaft using the two e-clips.
2. Thread on the shock spring adjustment collar.
3. Apply a small amount of oil to the o-ring or use green slime for longer life. Slide the o-ring into the bottom of the shock body. Secure the o-ring with the lower black cap.
4. Slide the shock shaft assembly into the shock body
5. Fill up the shock with oil. Move the shock shaft up and down to help bleed the air out.
6. Place the bladder onto the top of the shock. Oil may squeeze out. Fasten the shock cap onto shock body.
7. Slide on the desired spring (not included). Attach the shock end with the set screw.
8. Attach the two ball end cups.

2	20164	Ball end cup
1	20466	M3 x 3 Socket Set Screw, Alloy
2	20418	2mm E-Clip
1	20465	O-Ring
1	20464	Bladder
1	20463	Shock Top
1	20462	Shock Collar
1	20461	Shock End
1	20458	Shock Shaft
1	20457	Lower Cap
1	20459	Shock Piston
1	20460	Shock Body
QTY.	Art. no	Description